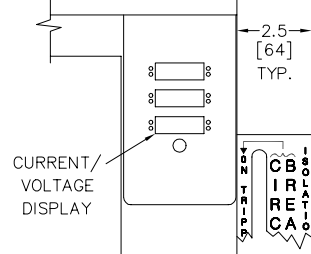
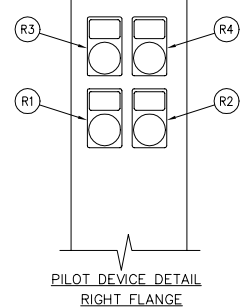
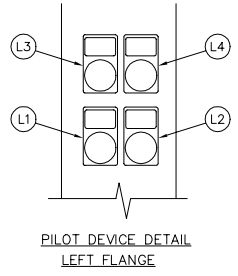


- PILOT DEVICE LEGEND
LEFT FLANGE**
- L1. SWITCH IN EMERGENCY LIGHT
 - L2. PUSH TO TEST BUTTON
 - L3. SWITCH IN NORMAL LIGHT
 - L4. EMERGENCY ISO SW. OPEN LIGHT




- PILOT DEVICE LEGEND
RIGHT FLANGE**
- R1. START PUSH BUTTON
 - R2. STOP PUSH BUTTON
 - R3. POWER ON LIGHT
 - R4. PHASE REVERSAL LIGHT



VOLTAGE	HORSEPOWER
200V	125-150 HP.
208V	125-150 HP.
230V	150-200 HP.
380V, 415V	250-300 HP.
460V	300-400 HP.

NOTES:
ALL DIMENSIONS IN INCHES AND MILLIMETERS ()

DRAWN SR	2-10-98		METRON, INC. DENVER, CO.
CHECK KH.	2-21-98		
APPD J.C.	2-21-98		
ENCLOSURE DIMENSIONS MODEL M450 W/TRANSFER SWITCH 76" CABINET ELECTRIC FIRE PUMP CONTROLLER		CD32941B	
		SCALE N.T.S.	SHEET 1 OF 1